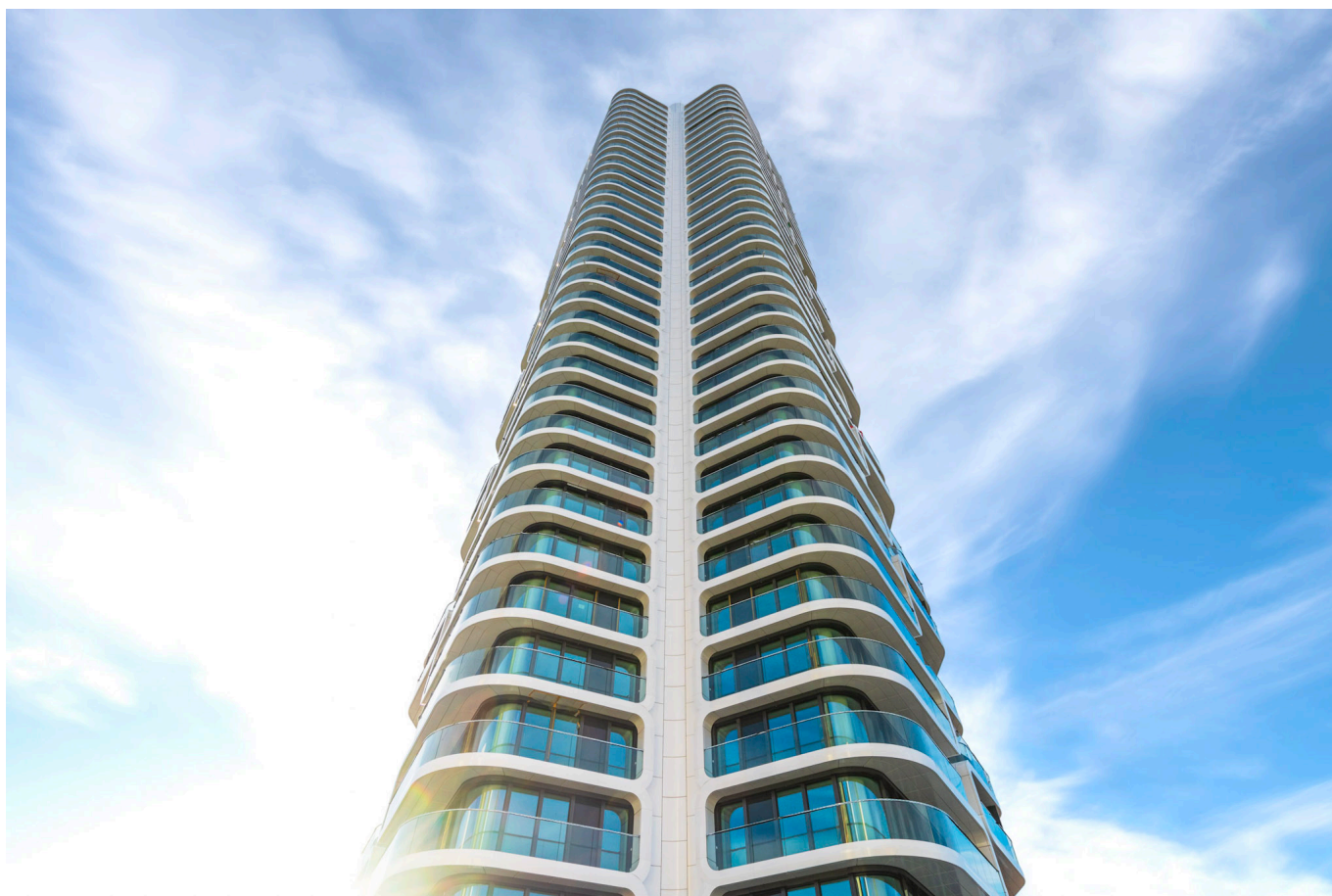




Property card

# Grand Tower



---

Category: Residential construction

Year: 2020

Type: New building

2400: Door elements

413: Functional doors

---

The Grand Tower stands as an iconic solitaire in Frankfurt's Europaviertel and redefines modern living: 180 metres high, 47 floors and 413 flats combine urban luxury, architectural clarity and exceptional views over the skyline. Spacious communal areas such as the Sky Lounge and rooftop terraces emphasise the high-end character of the building.

---

## Germany's tallest residential tower

With a height of 180 metres and 47 floors, Germany's tallest residential tower sets new standards in urban residential construction. A total of 413 exclusive condominiums form a building ensemble that sets standards for modern residential architecture, high-quality fittings and efficient project organisation.

### Our assignment

We supplied around **2,400 door elements** for flat entrances and interiors for this extraordinary construction project. These included **413 flat entrance doors in a multifunctional design**, equipped with **RC 3 burglary protection**, **climate class III** and a **sound insulation value of  $R_{w,P} = 47 \text{ dB}$**  - a high-performance combination that meets the high requirements for security, comfort and durability in high-rise construction.

### Technical highlights

Numerous technical innovations were also utilised. These include the **zero-joint technology**, which ensures a precise, high-quality appearance, and the specially developed "**ventilation frame**", which was fitted to **1,600 door elements** and supports efficient air equalisation within the flats. The doors themselves are **finished in a premium white paint** - elegant, discreet and ideally matched to the light-flooded, transparent design concept of the building.

## Logistical masterpiece

The project management proved to be particularly challenging: each delivery batch contained the door elements for exactly two floors. As there were **no storage facilities** on the construction site and **all the trades only shared two lifts**, the deliveries had to **be planned down to the minute**. A precise process was crucial - and succeeded as a real "masterpiece" of efficient construction coordination.

---

## Gallery



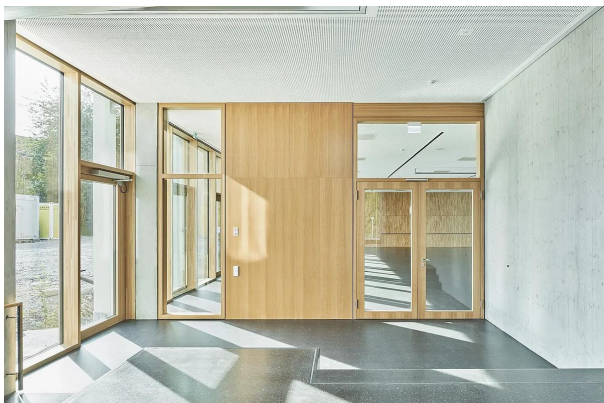
---

## Products



### Interior doors

Interior doors from Arbonia for architecture and commercial construction with design variety, function and high-quality doors with frames [Find out more now](#)



### Functional doors

Functional doors from Arbonia combine fire protection, sound insulation and security with a variety of designs for sophisticated architecture [Find out more now](#)

---

## Contact us

[contact@arbonia.com](mailto:contact@arbonia.com)